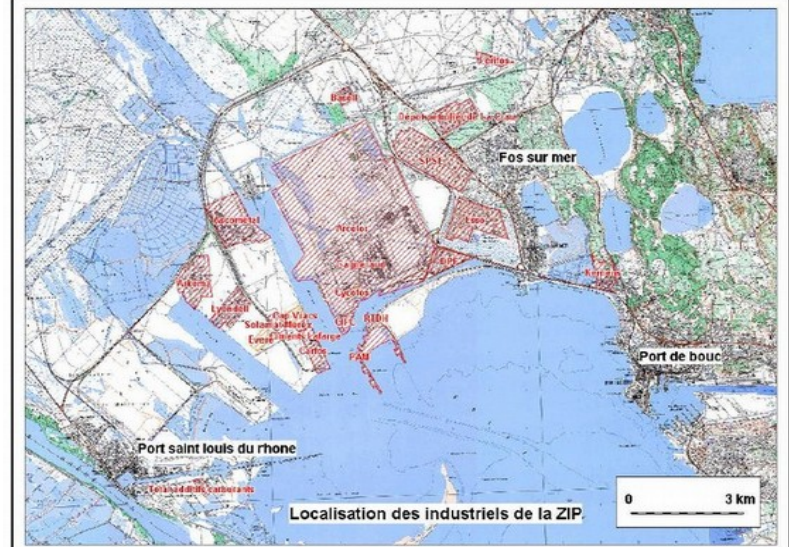




VOCE project / Citizen observation of the environment

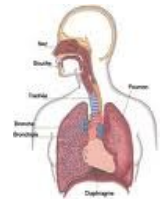
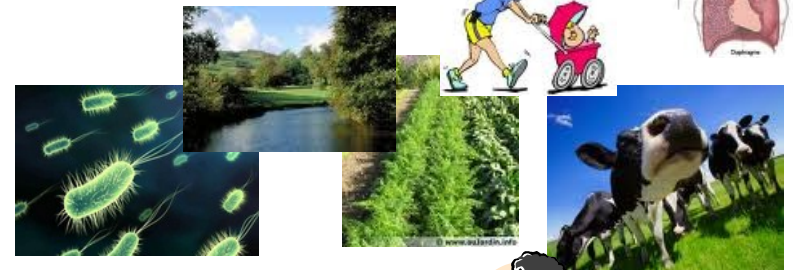




Knowing pollutants within
environments

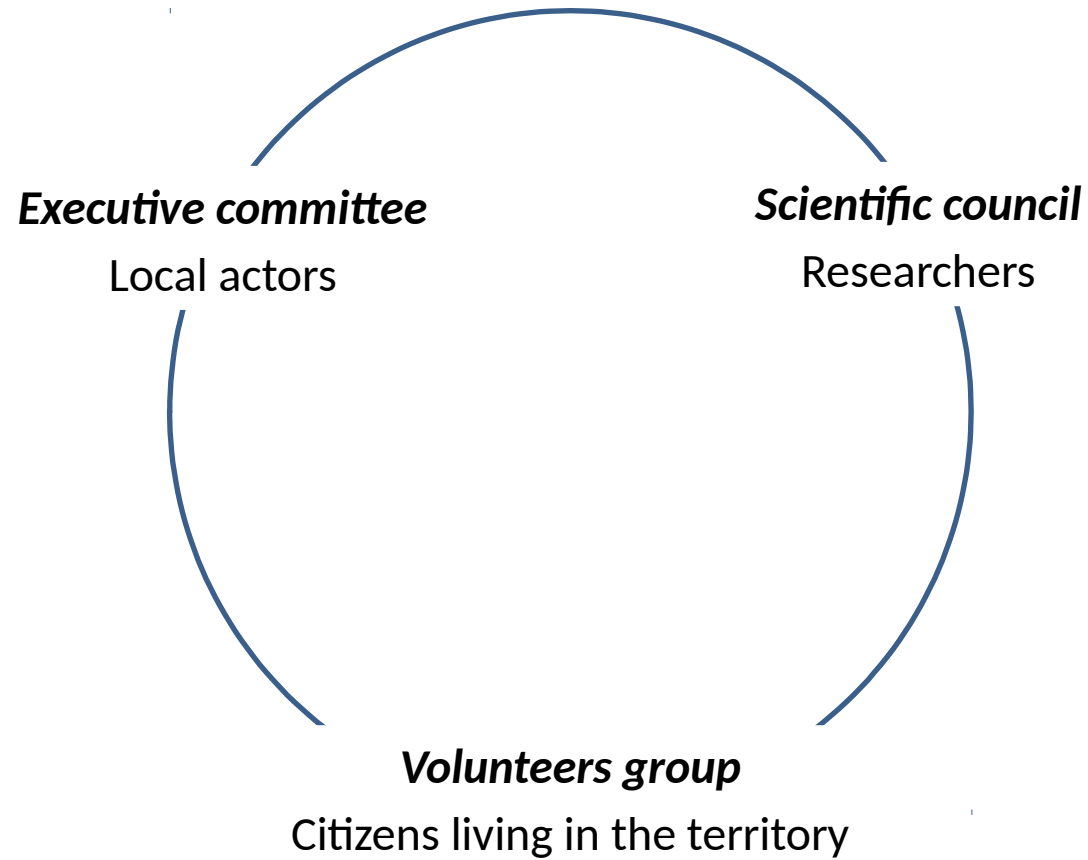


Interfaces
Human-environment
And between environments



Impacts of pollutions on
the living and human
health





Observing the environment and its evolution, on the basis of quantitative criteria

VOLONTEERS FOR A CITIZEN OBSERVATION OF THE ENVIRONMENT

- Having citizens (= permanent) observations on environment and health as scientific data
- Allowing citizens to access to knowledge from the scientific process, in order to participate to the governance of their territory

At stake:

- Democratic issue
- Territorial issue
- Scientific issue



- Characterize the citizen local uses of the environment

(focus groups)

- Quantify potential of implementation

(census)



1. Recruitment
2. Training
3. Observations, transfer and analyse of data
4. Retrieval and communication of knowledge

- **Pilot action**

12 volunteers implementing training program and setting up of a lichen observation network

- **Public meetings**

Fos-sur-Mer
Grans

- **Observation campaigns**

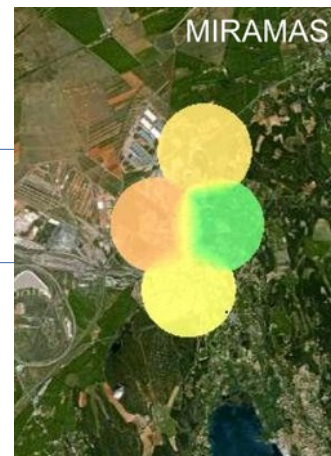
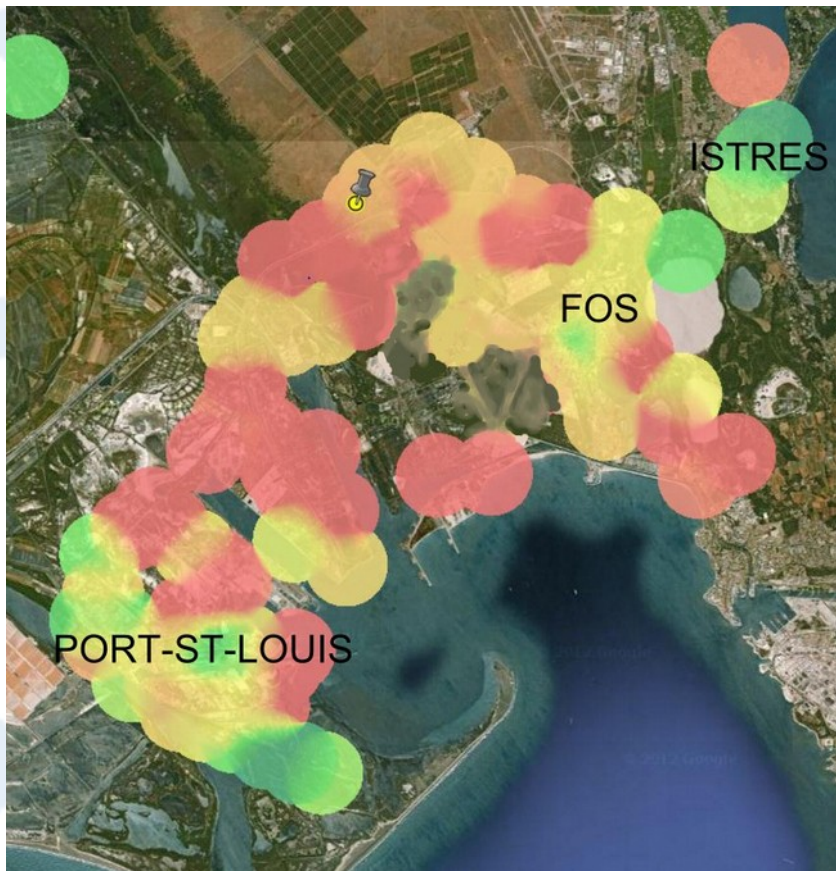
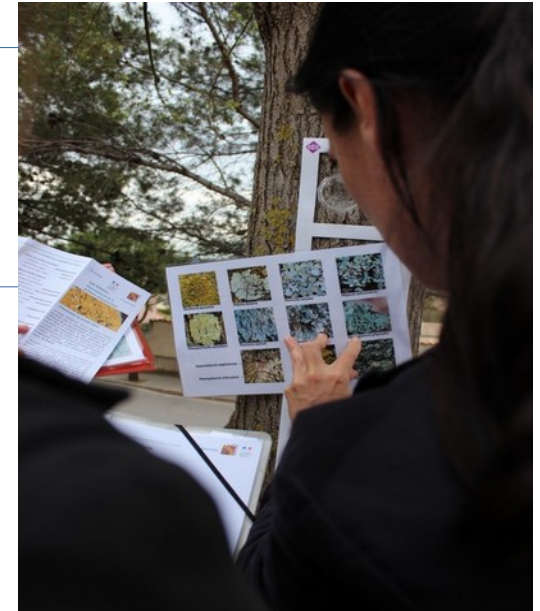
Biomonitoring air quality
Measuring sea contamination

- **Plenary conference**

25 people meeting to define their thematics of observation

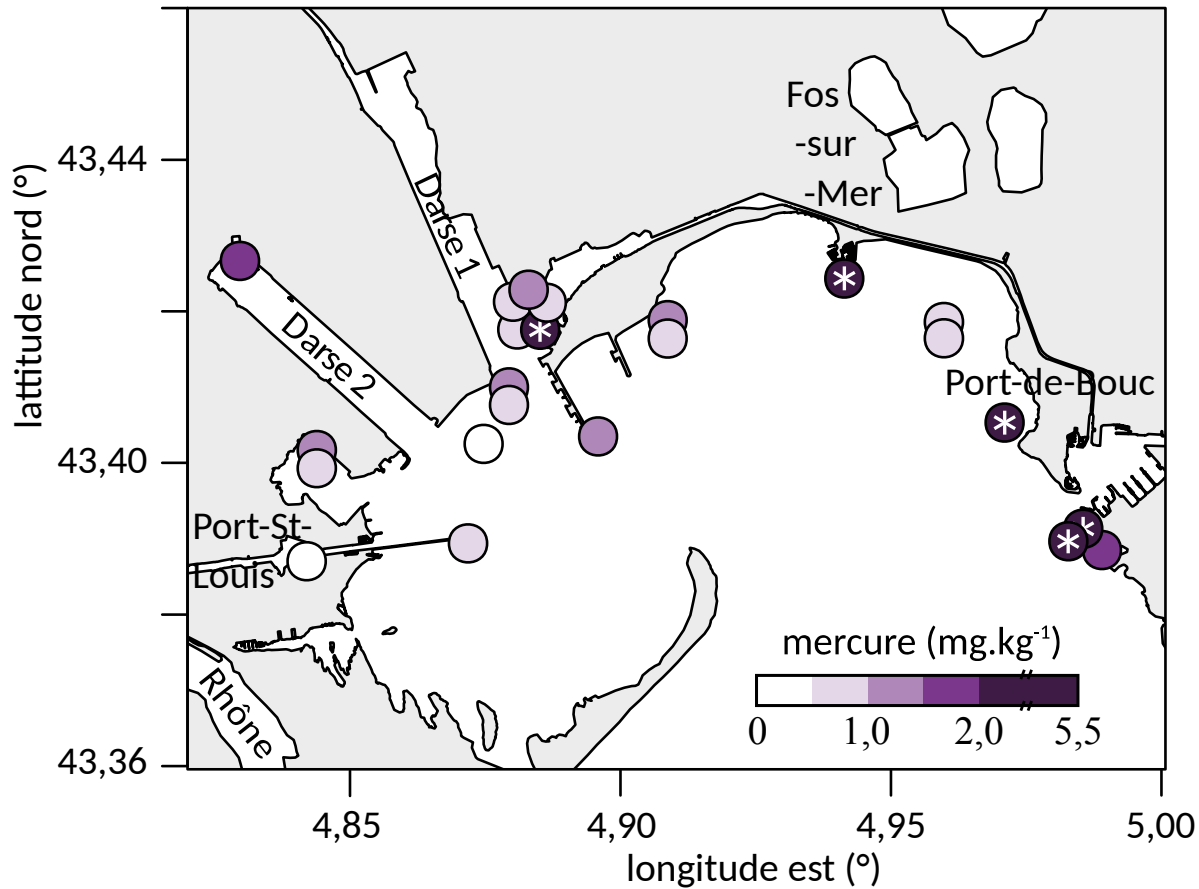


- **Biomonitoring air quality**



Cadaster of expositions

- Measuring sea contamination

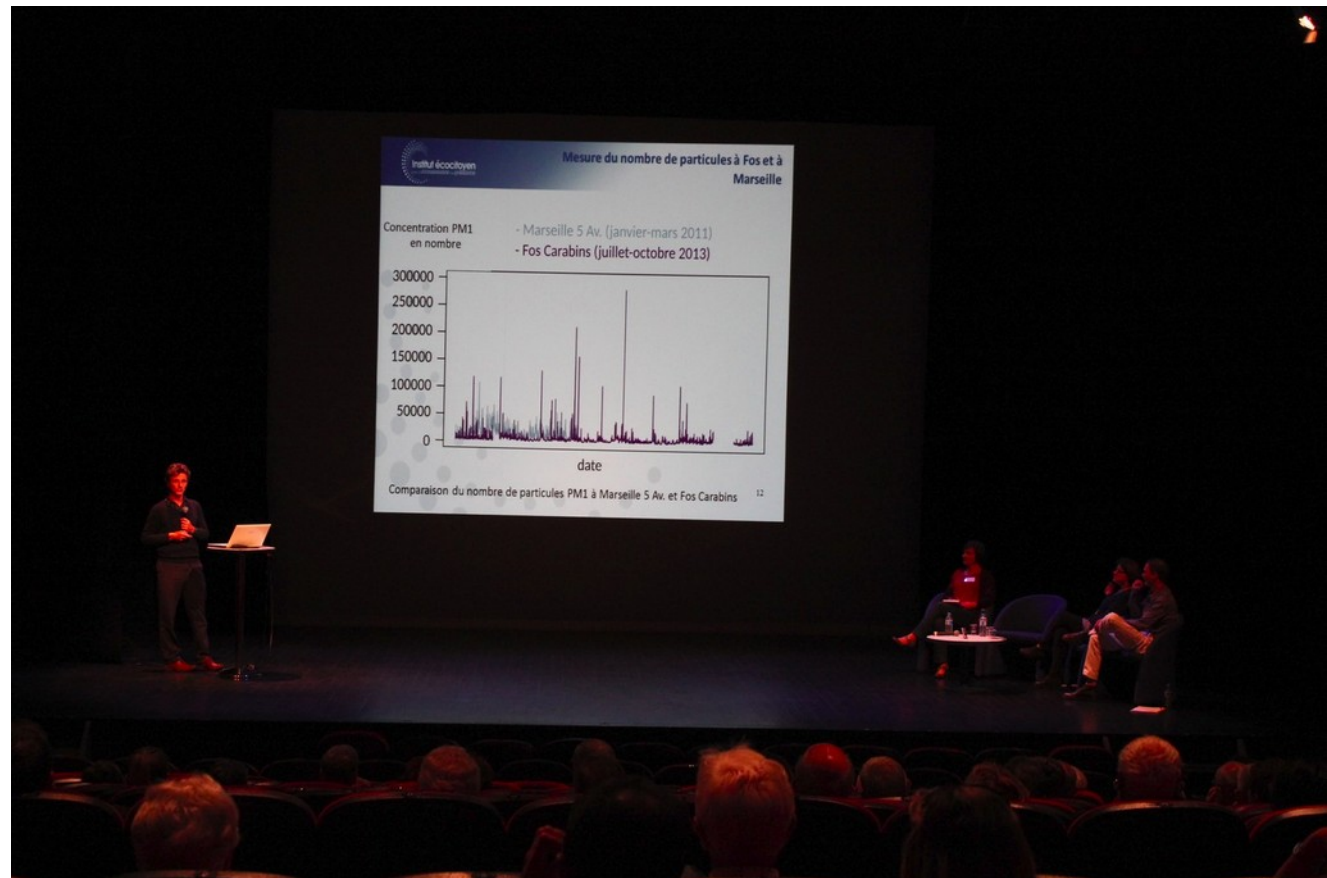


Cartography of sea contaminants
(metals, PAH, PCDD/F, BPC)

- Political approach : agendas, fears...
- Citizen mobilisation
- Few participation of industrial and economical actors



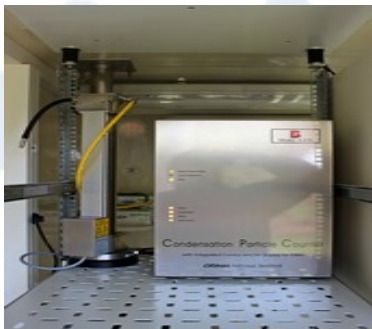
- Knowledge really shared between citizens and scientifics
- Maturation of the decision process
- Complementary studies





Scientific network, methodology & equipment

- Ultrafine air particles measurement
- Atmospheric source study
- Study of chlorination by-product impacts on marine environment
- Soil measurements and study of plant-soil transfer
- Study of pollutant impregnation



+

Secular knowledge, local culture & continued presence

- Observation of air quality bio-indicators
- Plant cultivation
- Sea water sampling
- Fishing sea species
- Environmental notification

